

Tissue Details

Palatka's tissue operations consist of three paper machines and an onsite tissue converting operation.

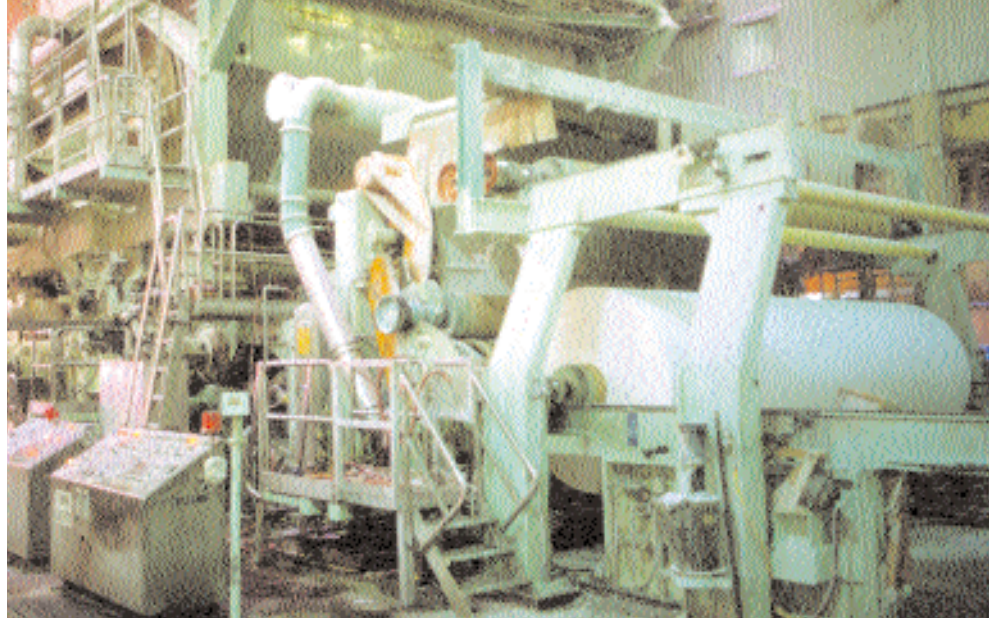
No. 3 Tissue Paper Machine is a KMW twin-wire machine rebuilt in 1985. It produces single or 2-ply bath and napkin paper in the range of 9.5- to 14.5-pound basis weight.

No. 4 Tissue Paper Machine is a Beloit twin-wire machine installed in 1981. It produces single-ply or 2-ply bath tissue in the range of 9.5- to 12-pound basis weight and manufactures tissue paper at speeds up to 6,500 feet per minute (74 miles an hour).

No. 5 Tissue Paper Machine, a Beloit twin-wire machine rebuilt in 1988, produces single-ply towel paper or 2-ply towel or napkin paper in the range of 12.4 to 32-pound basis weight. On April 17, 1999, it established a world record by producing 2.21 tons per day per inch of machine trim.

Together, these three paper machines produce about 200,000 tons of tissue annually.

Palatka's tissue paper is converted into millions of cases of finished consumer and away-from-home bath tissue, paper towel and



napkin products. This occurs at high-speed manufacturing lines, many of which feature new adjustable multi-roll wrappers or multi-pack bundlers.

Finished cases are stored in four onsite warehouses. With a total area of 800,000 square feet, these warehouses accommodate storage of 850,000 cases. The tissue warehouse system includes 75 truck spots and 19 railcar spots.

In a typical year, the Palatka Operations transforms some 1.9 million tons of wood chips into about 535,000 tons of paper and paper products.

Team Support



Electricians, millwrights, mechanics and pipefitters play vital roles in the success of the Palatka Pulp and Paper Operations.

The Palatka Operations' Kraft and tissue business units are assisted in their operations by a fully integrated support system consisting of production, maintenance, technical, engineering and administrative services.

For instance, our Power & Recovery areas provide treated water, an efficient self-generated energy supply, steam for operations, recovery of chemical by-products, and operation of air quality control systems.

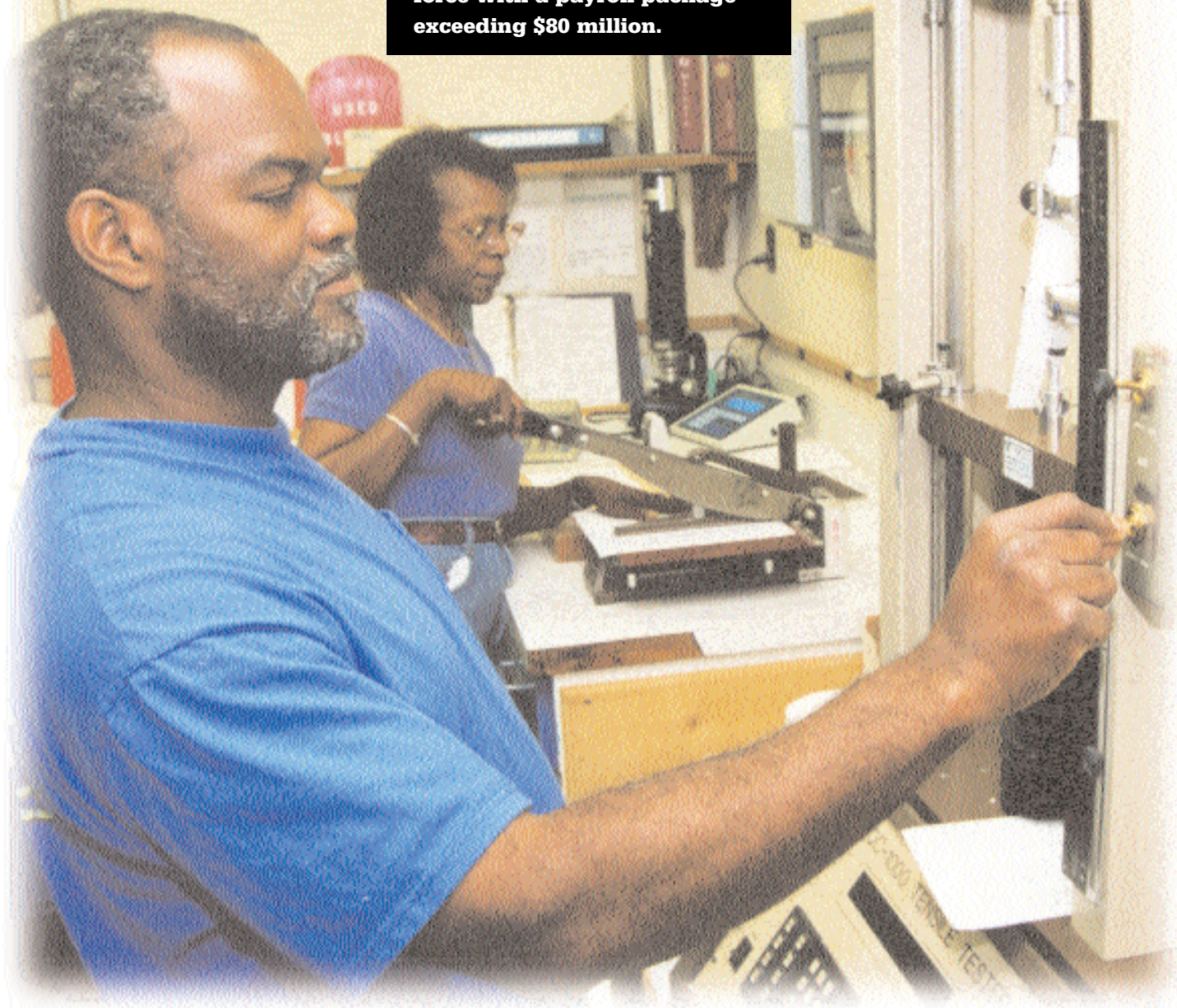
Palatka's Pulp Mill team handles receiving, storage and processing of wood chips; slush pulp production; and operation of our Bleach Plants. The result of this team's efforts is a reliable supply of high-quality pulp to feed our Kraft and tissue machines.

Shipping operations on both the Kraft and tissue sides of the mill are responsible for handling finished product and, along with our Traffic Department, making sure that shipments reach our customers on time, in the right quantities and in good condition.

A separate Tissue Quality Audits Department is responsible for the quality of our tissue paper and converted tissue products. In this area, an aggressive program built upon the concepts of statistical process control, MRP II, communications and operator training has helped Palatka establish a track record of consistently improved quality on the tissue side.

Quick Fact:

Each year, Georgia-Pacific's Palatka Pulp and Paper Operations provides its work force with a payroll package exceeding \$80 million.





Reaching out to the public, both young and old, is important to Georgia-Pacific's efforts to foster a better understanding of how we are doing our part to protect the environment and the community we call home.

Supporting Georgia-Pacific's commitment to operate in compliance with all local, state, and federal environmental standards and regulations is the Palatka Operations' Environmental Services staff. In addition, our Technical Services personnel work with the operating areas to evaluate raw materials, develop methods to improve processes, and solve process problems. They also oversee the quality of our Kraft paper products, manufactured according to requirements of ISO 9002.

Our Engineering Department provides the mill with services that range from estimating capital improvement projects to design and implementation of such projects.

At the heart of Palatka's ability to manage, control and synchronize a complex series of interrelated activities is a network of computer systems developed, maintained and continuously upgraded by our Information Resources staff. System programmers and computer analysts provide 24-hour-a-day online information systems to address the mill's production and process control needs.

Handling the scheduled, preventive, and immediate maintenance requirements of the Palatka mill are skilled mechanical,

electrical and instrumentation employees. Within this group, specialized talents enable our mill to predict and address certain maintenance needs before they become critical and to avoid the purchase of replacement equipment by continually rebuilding the equipment we already own.

And attending to the Palatka Operations' day-to-day business requirements are employees responsible for financial operations, the purchasing function, our storeroom and receiving systems, communications and human resources and training services.

Commitments

With more than five decades of progress behind us, Palatka Pulp and Paper Operations is positioned for a bright future. As we pursue that future, we will continue to focus on the commitments that are vital to our success:

Being A Safety Leader

Our empowered work force is now adept at identifying and reporting hazards, evaluating alternatives and implementing solutions. Together, we have earned the honor of being the safest tissue converting operation in the U.S. for three consecutive years.

Protecting The Environment

Close attention to process activity, careful use of natural resources, new technology and techniques that prevent pollution and reduce emissions, and ongoing training and education for employees support the progress we have made and are continuing to make.

Improving Our Operation

By constantly improving the efficiency of our manufacturing operations, the quality of our products, the service we provide our customers, and the level of communications among our team, we are enhancing our ability to compete in our markets, thereby supporting the long-range future of the Palatka Pulp and Paper Operations.

Supporting Our Community

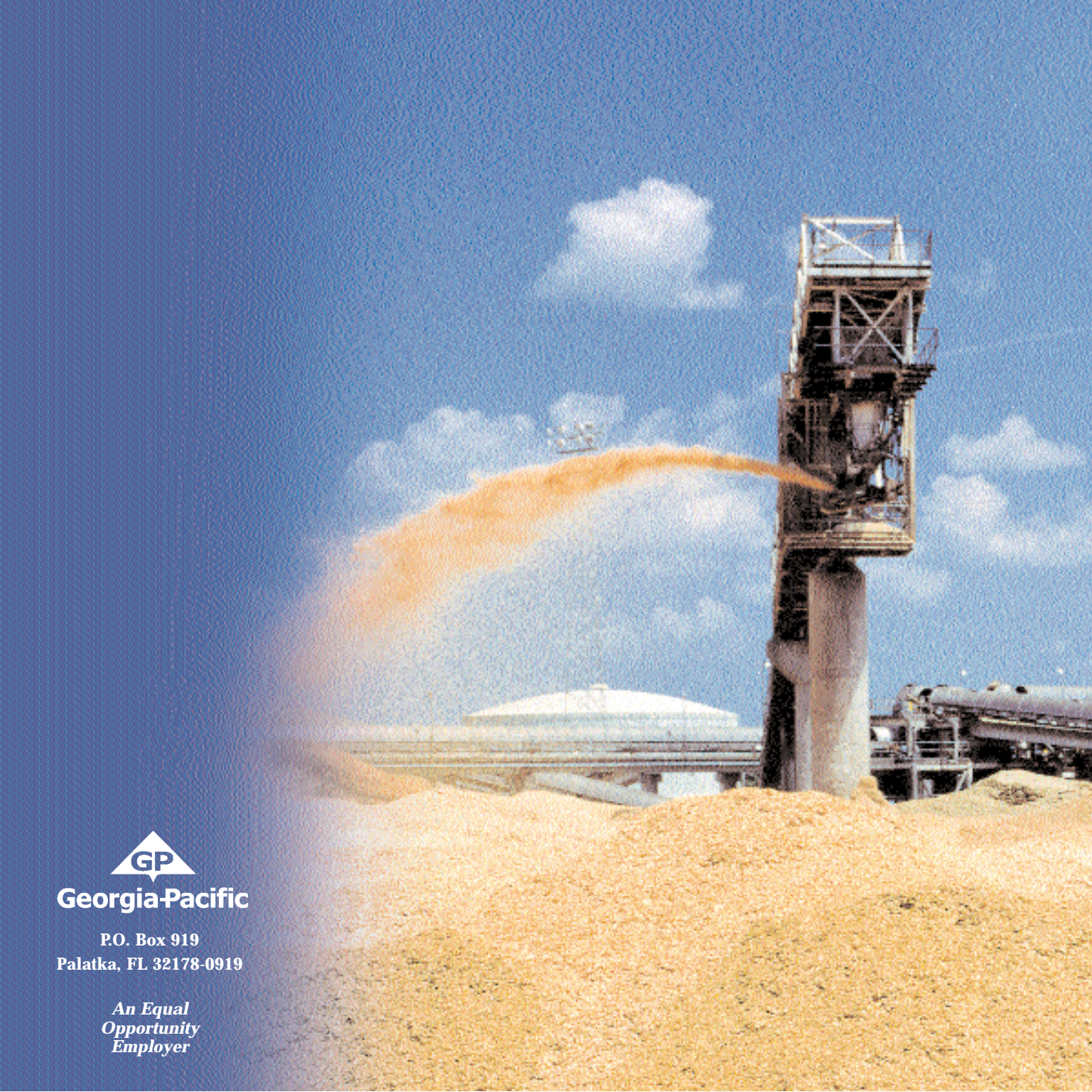
As an active participant in the history of Palatka and Putnam County, an advocate for the community's growth and development, and a contributor to its quality of life, we are working to build a better future for our employees, our neighbors and the community we call home.

Quick Facts

- ▲ Operating as fast as 6,500 feet per minute, the mill's No. 4 Tissue Machine makes paper for bath tissue at speeds over 70 miles per hour.
- ▲ One of the by-products of the papermaking process at Palatka is turpentine, collected as a gas during the pulping process and then condensed to liquid form.
- ▲ Considering wages and benefits paid to employees, millions of dollars spent on local purchases, local taxes paid, and other support of community activities and organizations, the Palatka mill has a direct and indirect financial impact on the local community (not including pensions paid to retirees) amounting to hundreds of millions of dollars annually.
- ▲ An efficient water recycler, the mill has decreased its water usage to produce a ton of paper by 25% during the past four years.
- ▲ Effluent from the mill receives a high level of treatment, first in a 360-foot-diameter primary clarifier and then during a 40-day journey through a 1,000-acre biological treatment pond system that comprises the mill's secondary treatment process.
- ▲ The mill generates most of its own power – about 60 megawatts. Approximately 75 percent of the fuel used is made up of spent chemicals from the pulping process and tree bark.
- ▲ Georgia-Pacific is an Equal Opportunity Employer. This means that it is company policy to treat all employees and applicants equally, with no discrimination because of a person's race, color, religion, national origin, sex or age. This policy also applies to qualified handicapped persons. This policy applies to recruiting, hiring, job assignments, promotions, transfers, training and educational programs, benefits, discipline, overtime, layoffs and recalls, pay and other forms of compensation, and all other terms, conditions and privileges of employment.

Calling
Palatka
Home
Since 1947





Georgia-Pacific

P.O. Box 919
Palatka, FL 32178-0919

*An Equal
Opportunity
Employer*